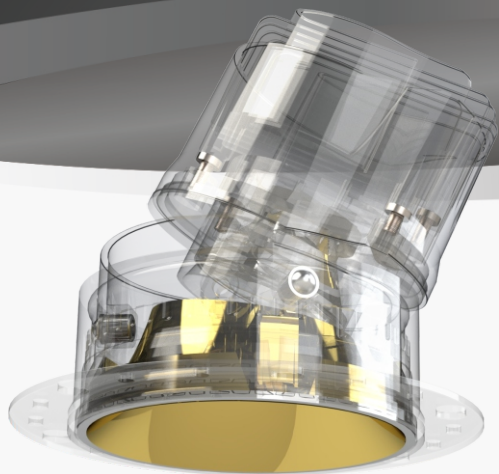


ONE-STOP Design
Catalogue & Website
Design



Design

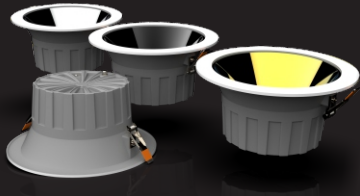


绿叶设计
GL-Design Studio

[Website · Brochure · Animation]

■ Design Elements Guide

3D Rendering
Show Details



Exploded Image
Show Originality

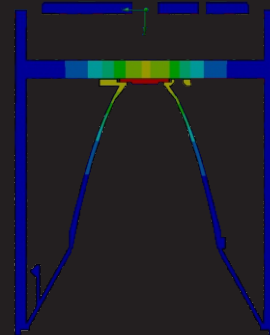
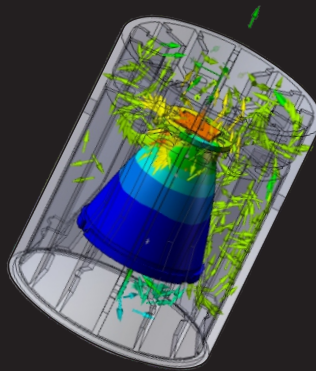
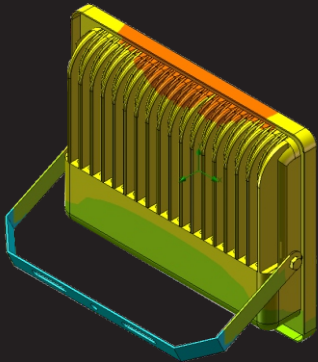


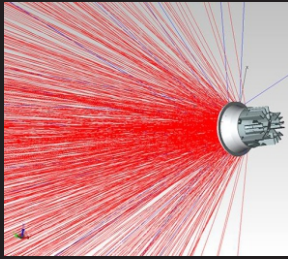
Perspective Image
Show Structure



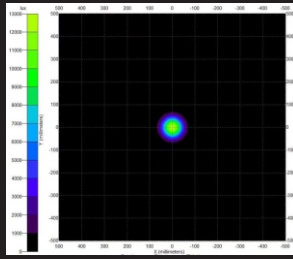
Thermal Simulation Effect

Show the internal structure of lights. Analyze the thermal distribution and air convection. Can Animation.

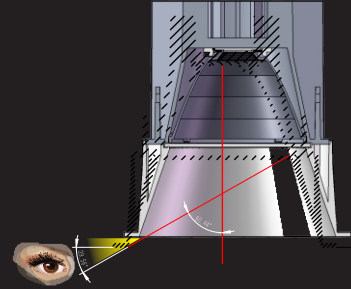




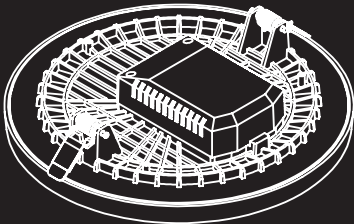
Ray Trace
Show Optics R&D



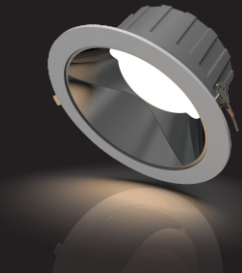
Ray Optimization
Show Optics R&D



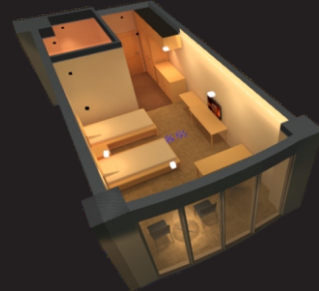
Cut-off Angle
Show Anti-glare Design



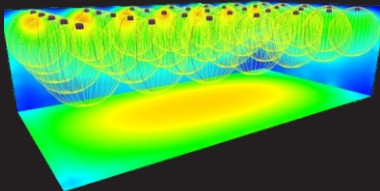
2D Diagram
Show Size



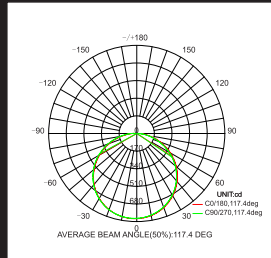
Turn-on Effect
Show Lighting Effect



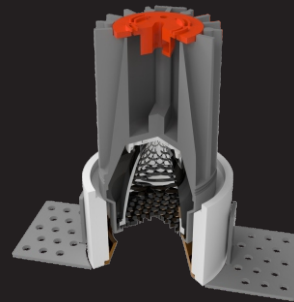
Installation Lighting Effect
Show Project Effect



Lambertian effect
Show Beam Shape



Lighting Distribution Curve
Show Beam Angle



Sectional View
Show Structure

Case 1: 3D Structural Effects

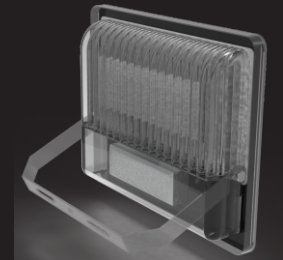
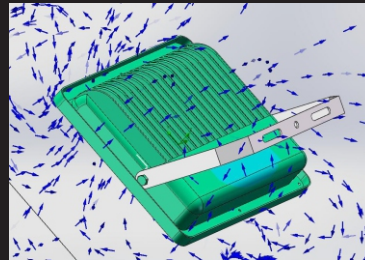
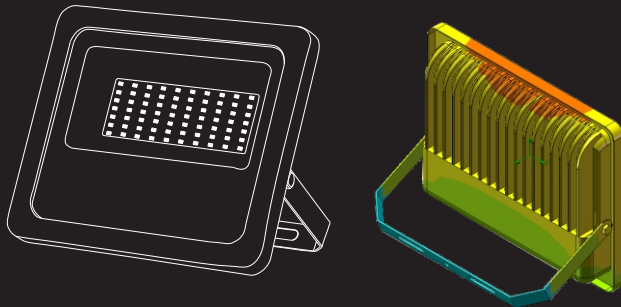
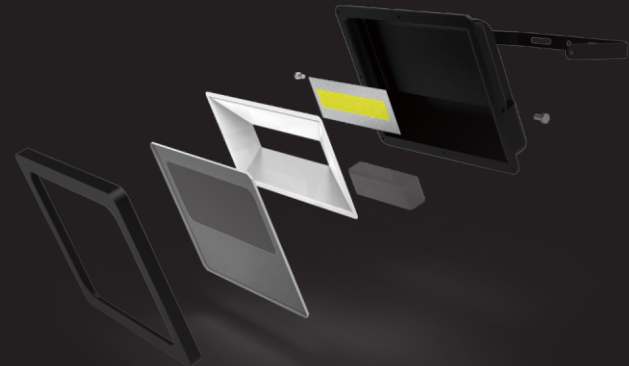
Case Background: Many clients envied the expertise of overseas major lighting brands before met our designer.

Now, your company is able to own same or better designs.

Case Situation: 1. A trading company for Flood Light. 2. Very long distance located. 3. Client has no 3D designer themselves.

Case Solutions: 1. Raw materials prepared by clients: detail pictures of product and an excel datasheet.

3. Designer finished the 3D drawing and rendered below effects.

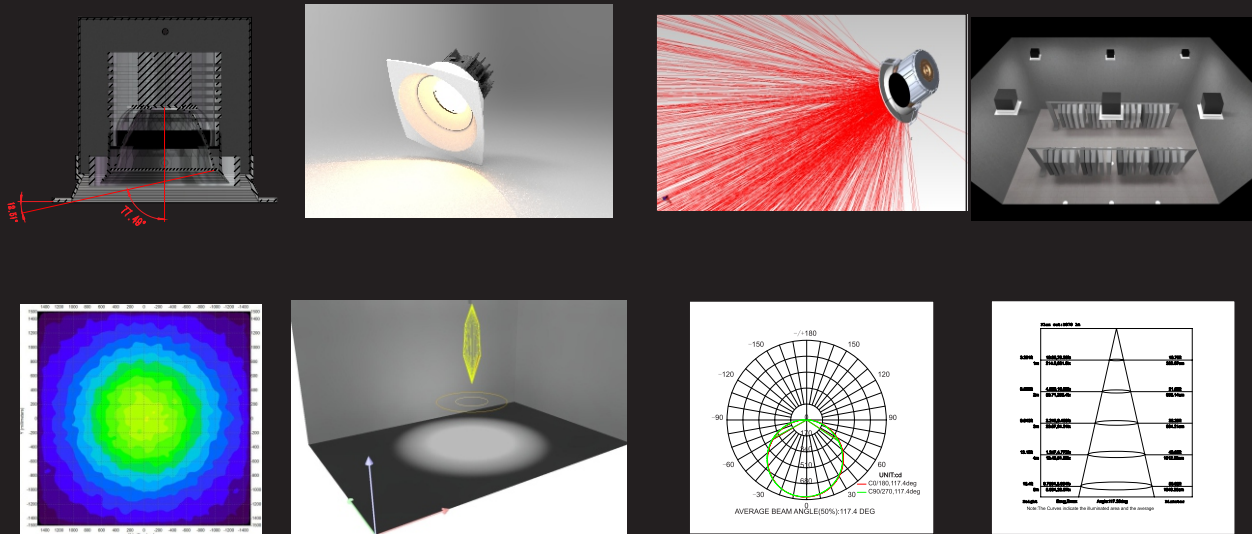


Case 2: Lighting Effects

Case Background: Imagine how you did the demo when clients walked into your company? Regularly, you may show him overall-look of the product first, and turn it on, then take it apart to show components advantages. After that, may be specifications and application cases. Our design process is just in comply with this process. Because we would prepare overall product's images, turn-on effects, detail images, exploded views, thermal effects, 2D sketch, perspective views, lighting intensity distribution curves, spotting effects, cut-off angles, specifications, applications and other very professional factors. All of the above factors would be merged into the design according to the lighting fixtures categories.

Case Situation: 1. A medium-sized factory. 2. 3D original file prepared by client. 3. .ies files and .pdf report prepared by client. 4. A specification form with basic data listed in prepared by client.

Case Solutions: 1. Hi-definition 3D rendering. 2. Design lighting effects according to .ies files by professional softwares such as dialux, dialux EVO and else. 3. Designer finished the design with below factors:



Regular Process of Brochure Binding and Material Thickness.



Staple
8-23P



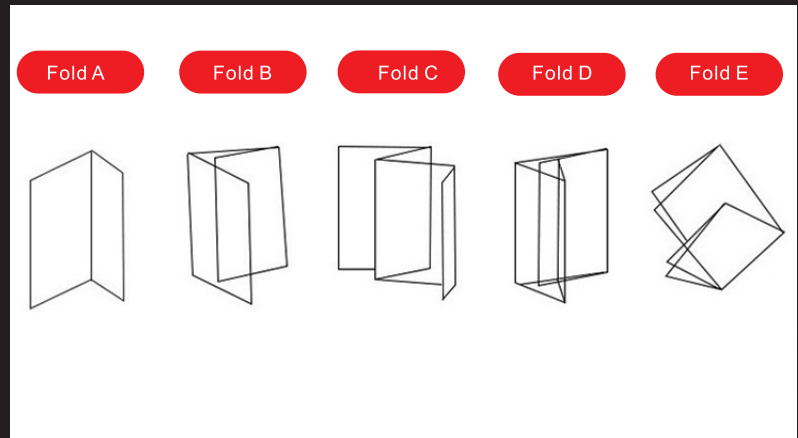
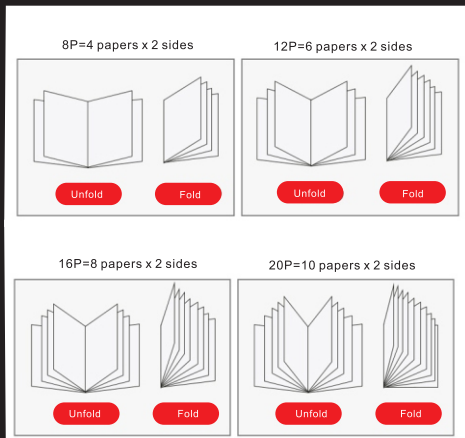
Glue-NO Threads
36P-100P



Glue-with Threads
>104P

P=Page

Folding



Q: What materials are needed from clients?

A 1. Excel datasheet, which include basic parameters such as products' dimensions, cutout, input voltage, LED chip brands, efficacy, CRI, CCT, special selling points and else.

2. Each products' category, please provide .stp file for rendering. If you don't have it, please provide sample for drawing.

Unless it is really necessary, designer would NOT provide service DRAWING AS PER IMAGE.

3. Please try best to provide nice products' pictures you have for consideration use.

4. The models which need to be highlighted, please tell us.

5. Client's office, factories, shop, or production machines, around 5 pictures, for advertisement.

6. Client's logo .cdr or .ai files.

7. Client's slogan and brief introduction. (Please tell designer if edit is allowed.)

8. Client's contact ways, such as full company name, address, website, email, contact person and other you may want to be listed.

9. Except the 3D effects category, if you don't have a nice picture or .STP files, please provide samples for photography.

10. The lighting fixture's .ies files and its relevant .pdf test report, please try best to provide.

11. Other factors, if you have special instructions, please tell in advance. Such as color, style, taboo and must.

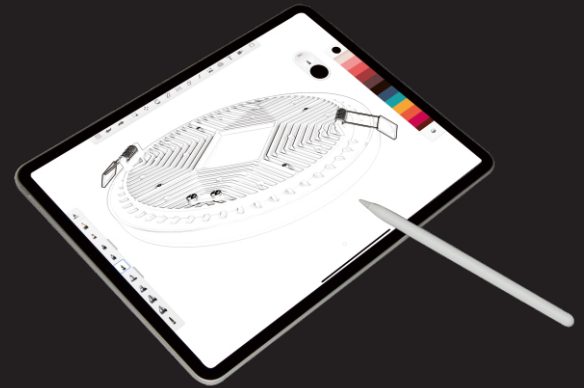
12. Other materials you thought might improve or facilitate the design.

Q: What's the MOQ for 3D effects category?

A: 5 pages.

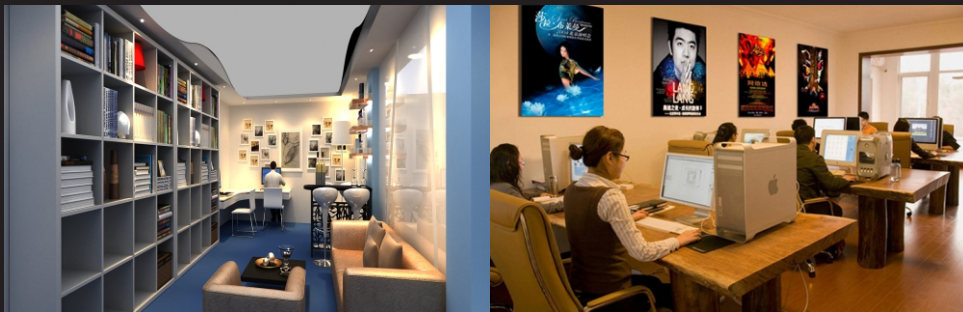
Advantages

1. The designer can speak English. It will save you labor.
2. The designer got many years experience in export business.



3. The designer got many years experience in LED lights R&D.

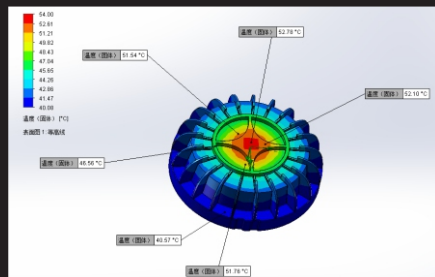
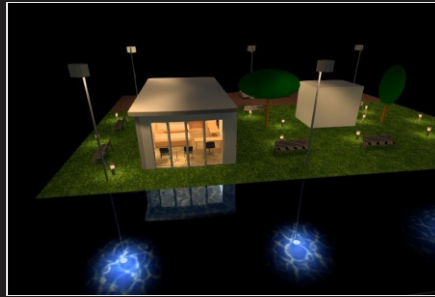
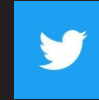
4. The designer's service is continuous. Not only to help you build a website, but also to help you run the website.
Not only help you make a brochure, but also provide technical consulting services for your salesperson.



What can we do for you?

1. Help you build and maintain English websites.

Exquisite product pictures, English descriptions, specifications, SEO, SNS links, GOOGLE data analysis, all is no problem.



2. Dialux light distribution calculation. When your salesperson usually receives an inquiry and has related needs, we can solve it for you in time. These materials can also be used for your website promotion. Improve your company's expertise. The designer can rewrite or modify the .ies file for you according to actual needs. Normally, When there are lamps with different wattages in a series, you only need to provide arbitrary wattages and different angles.one .ies file, the designer can make a complete series of .ies files for you. Save your precious time and large testing costs. If your company does not have equipment testing .ies, We can also help you test, the cost is lower than peers.

3. Raytrace

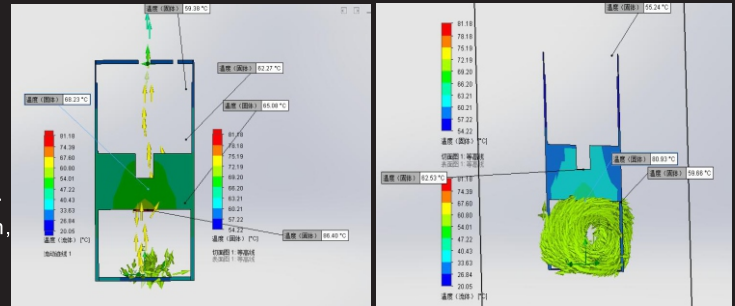
When you develop a new product, if you want to identify in advance whether the light can meet the design requirements (such as light Spot shape, uniformity, spot diameter, etc.), you can find us. We can even find In the calculation stage, you first export the .ies file of the 3D model to help you initially judge the effect of the lamp.Save the trouble of subsequent model modification.



What can we do for you?

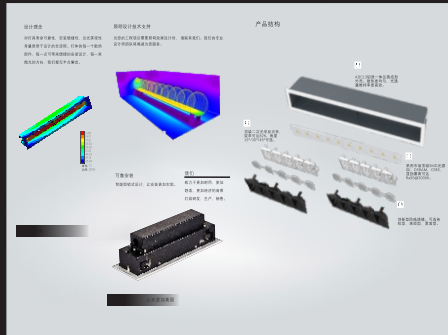
4. Thermal Simulation

The profit of lamps is getting thinner and thinner. How to save the material as much as possible while ensuring the life is a problem that every boss is considering. At this time, we can carry out the shell heat dissipation simulation for you and help you find the shell the part that can be subtracted and the part that must be added in the design. Help your design, reduce the number of proofing and verification, thereby speeding up the time to market for your new products.



Successful
Air Convection

Failed
Air Convection



5. Brochure Design

We can visualize or dynamic lighting parameters, electrical and structures. Just helping you for better sales.

6. Free E-Book(1 year)

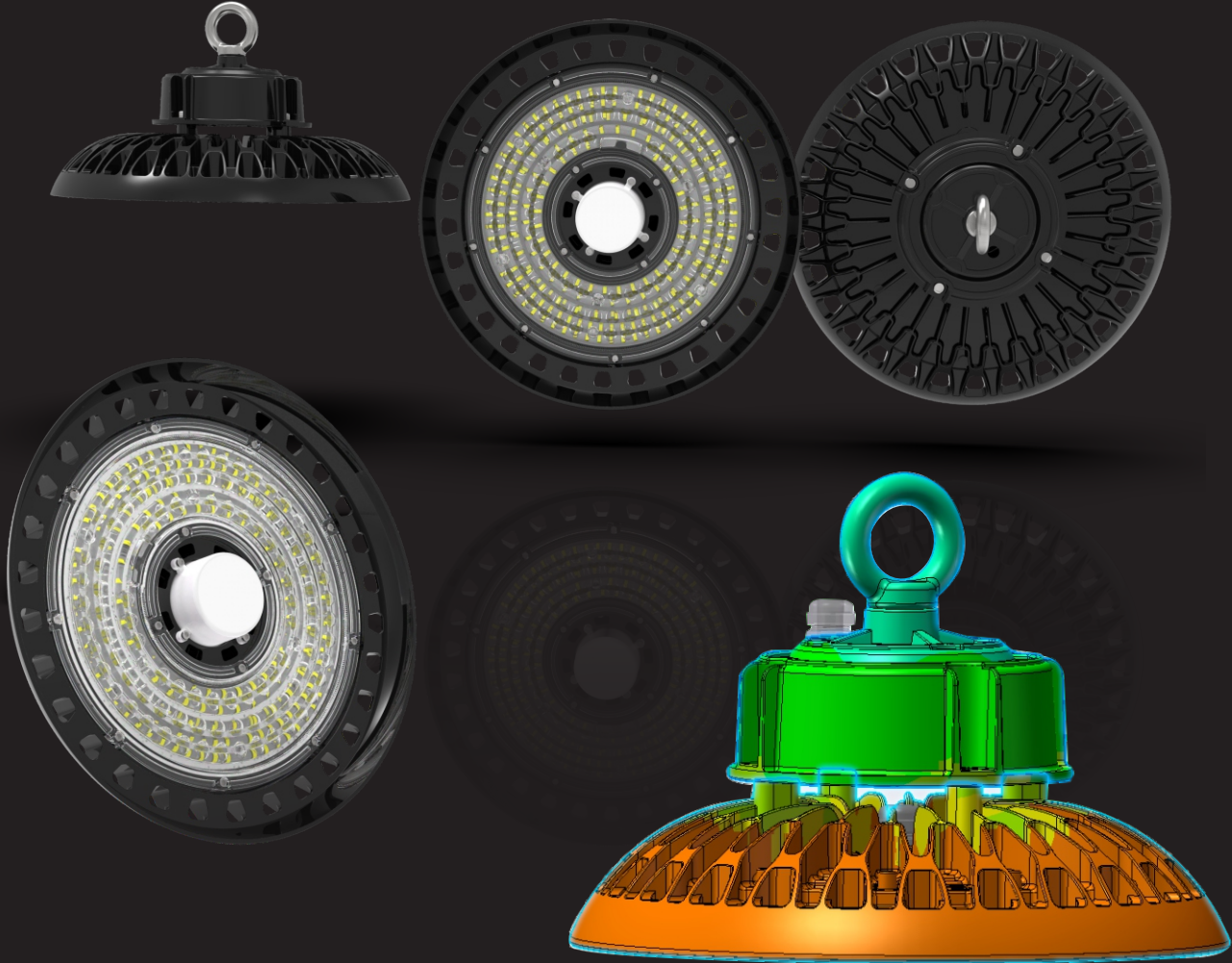
After the brochure is made, we not only deliver all the design documents and pictures, but also free of charge create E-book. This kind of E-Book does not occupy memory and can be linked or QR code sending exchange. QQ, WeChat, Moments, Facebook, and even embedded in your website.



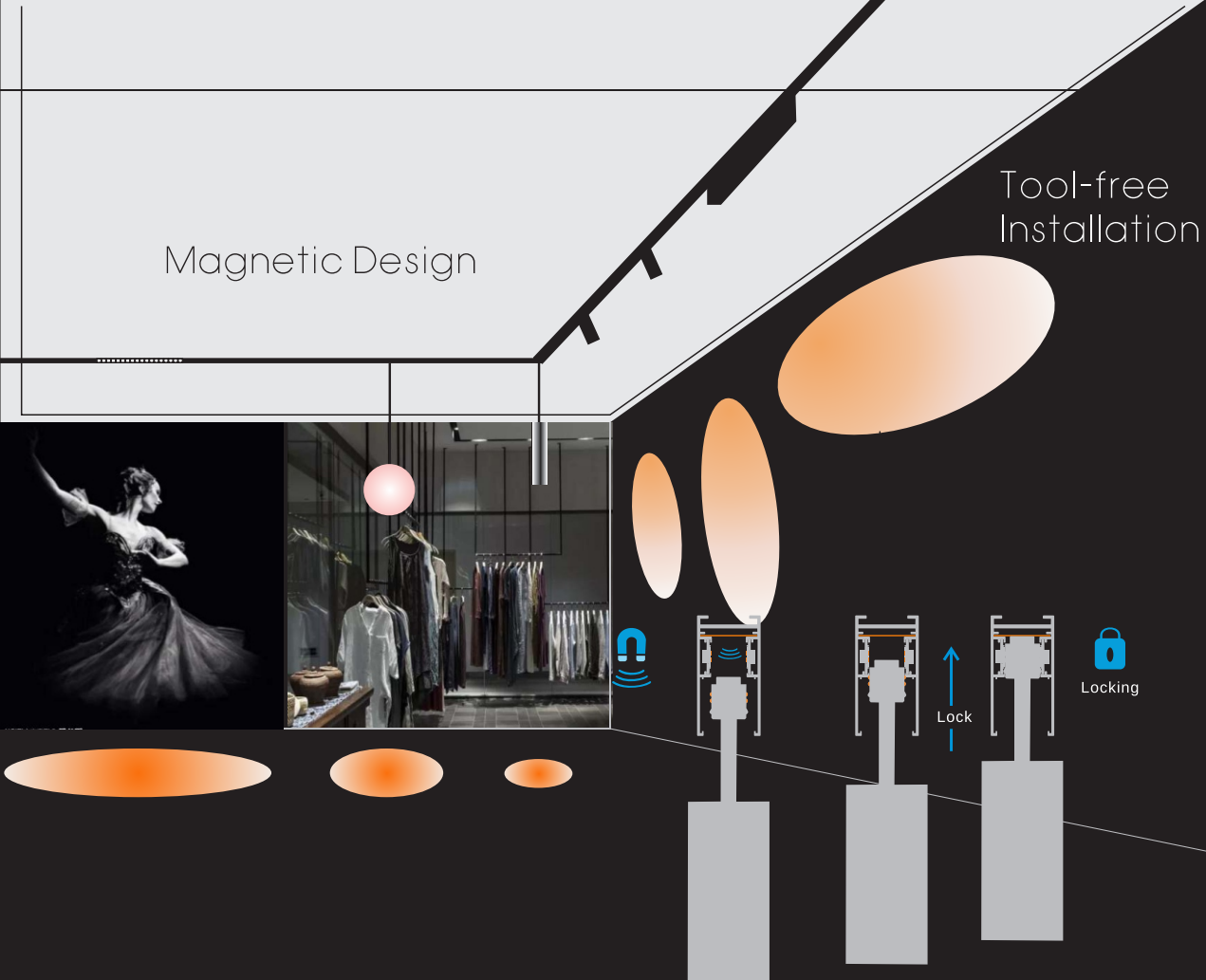
Project Cases: Exploded View



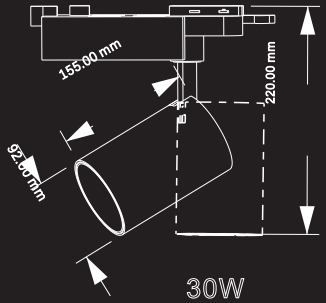
Project Cases: UFO



Project Cases: Magnetic Track Lights

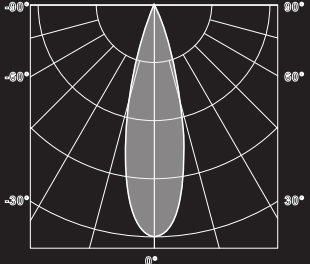


Project Cases: Track Lights

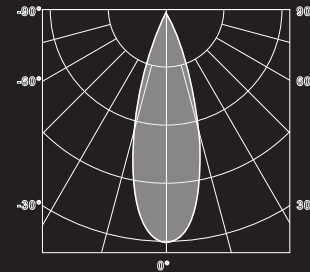


30W

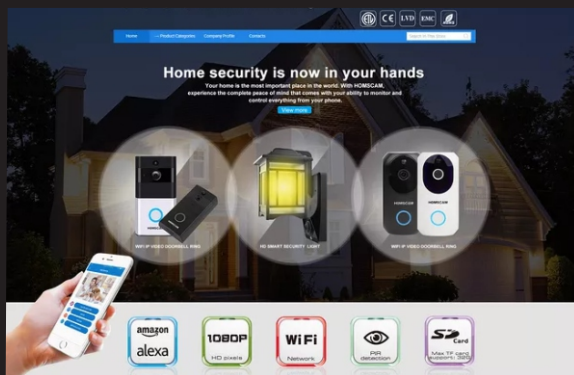
24°



38°



Project Cases



Parameters Visualization, Dynamic.



绿叶设计
GL-Design Studio

GL-DESIGN STUDIO

Contact: Colin.

Phone: 0086 131 1010 2114

QQ: 778234066

Wechat: colin13223

Website: www.gldesigner.com



Add.: NO. F107, Global Lighting Equipment Mall, Guzhen Town,
Zhongshan City, Guangdong Province, 528400, P.R.China.
